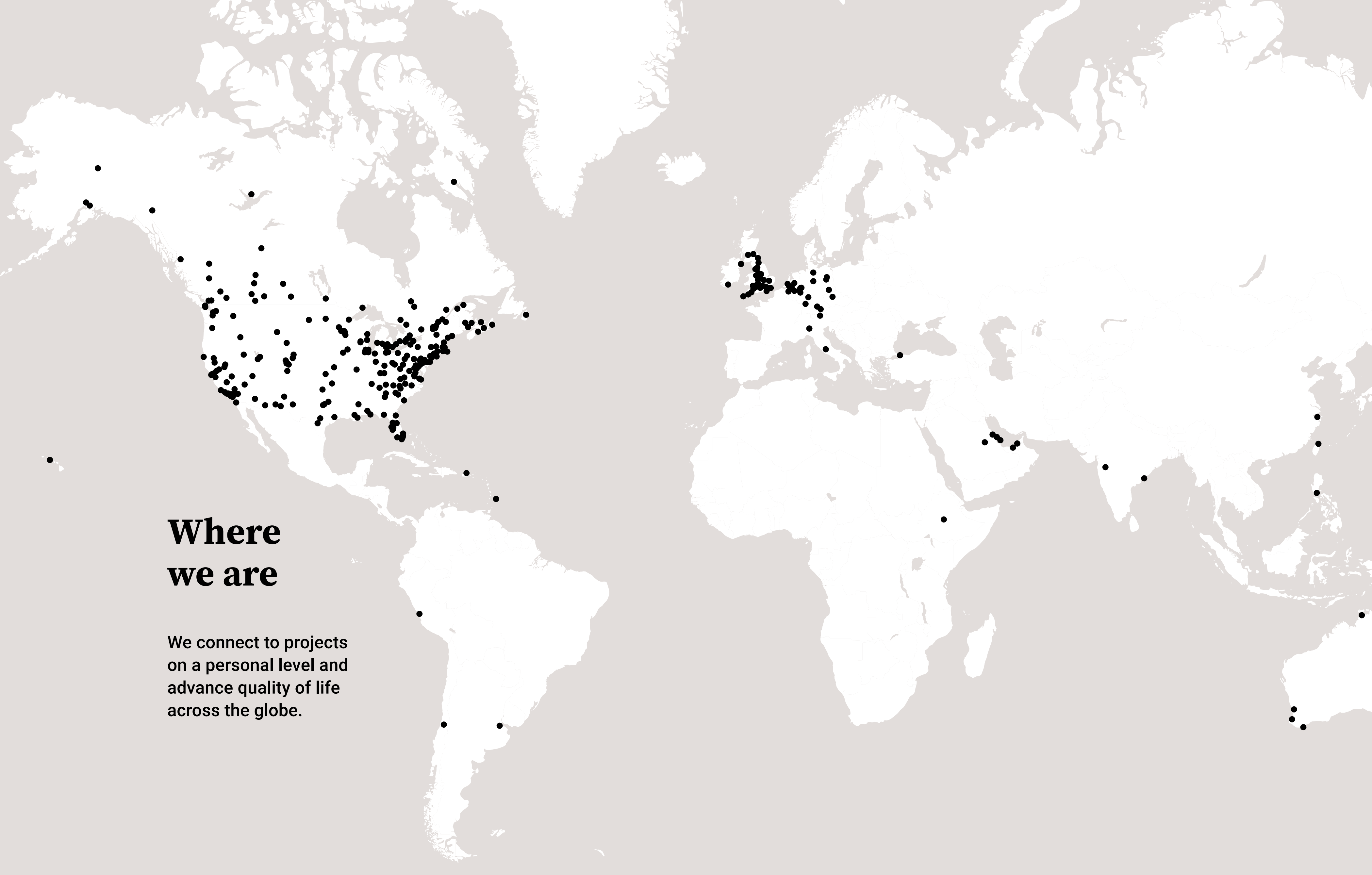




Waste Planning & Permitting

Energy & Resource Recovery





STN

Traded on NYSE & TSX

31,000

Employees Globally

450

Locations Worldwide

Where we are

We connect to projects on a personal level and advance quality of life across the globe.



Waste and Resources Sector





Developing Waste Infrastructure

Our team of waste managers and planners has a proven track record of delivering waste management infrastructure. Through development of planning or permit applications, or the discharge of consents and conditions, our understanding of both waste operations and the waste planning regime facilitates delivery of operationally workable solutions.

With experience in delivering waste infrastructure for both the Private and Public Sector, we understand both the Town & Country Planning Act and the Planning Act 2008 regimes. We know what is required to get infrastructure delivered efficiently, and can support our clients through the most appropriate, effective consent route.

“My sincere thanks for a job very well done. Stantec has proved invaluable to this, at times, arduous process.

It is absolutely right to say that my team could not of achieved this very positive outcome without your considerable input”.

**Head of Strategic
Projects at Oxford
Direct Services**

Experienced in the delivery of small to large scale infrastructure

Landfill	Household Waste Recycling Centres
Depots	Waste Transfer Stations
Recycling & Processing Facilities	Anaerobic Digestion
Mechanical Biological Treatment	Energy from Waste



Environmental & Planning Experts

Our environmental consultants work closely alongside our planners, engineers and economists to integrate environmental considerations into all stages of the design and development process..

Air Quality & Odour Management

Acoustics

Archaeology & Cultural Heritage

Biodiversity

Climate Change Assessment and Management

Construction Environmental Management Plans

Flood Risk and Drainage

Health Impact Assessment

Landscape and Visual Impact

Ground & Contamination Assessment

Socio Economic Appraisal

Construction & Operational Waste Management

GIS & Environmental Analytics





The Core Waste Planning & Permitting Team



NATALIE MALETRAS
Waste & Infrastructure
Planning

Natalie leads Stantec's environmental consulting practice. As a Chartered Waste Manager she has over 20 years experience working within and advising the waste management industry. Natalie has successfully managed the planning and permitting (including EIA) of a wide range of waste infrastructure including Energy from Waste, MRF, Transfer Station and HWRC development.



GARETH WILSON
Director, Planning
(Infrastructure)

As head of Stantec Infrastructure Planning, Gareth is a Chartered Planner and Chartered Environmentalist with 24 years of experience specialising in the planning and consenting of a wide range of major and nationally significant development proposals.



SIMON WREN HOWARD
Technical Specialist

Simon is a Principal Consultant and Chartered Waste Manager with twenty years of consultancy experience. Simon manages and delivers projects across the water as well as the energy and resources sectors. Simon's background is in environmental permitting, closed landfill management, landfill/ground gas modelling, land quality assessment, site investigation design and supervision as well as environmental auditing, monitoring and compliance



JON MACLAREN
Senior Technical Specialist

Jonathan is an experienced engineer with over 15 years of experience in the power and utilities industry. He has been involved in a number of highly successful and projects ranging from the UK's first industrial scale biomass power station, to the development of smaller scale advanced pyrolysis systems. From these projects Jonathan has gained significant experience in the specification, design, commissioning and operation of numerous Advanced Thermal Treatment processes.



PHIL BRANCHFLOWER
Air Quality & Odour

Phil leads Stantec's Air Quality Team and has a wide experience in informing EIAs, permit applications, investigation of design/compliance and has appeared as an Expert Witness. Key projects include: Runcorn EfW - s.73 application; Trident Park EfW - successful planning and EP applications; Singleton Birch gasification facility, Clay Cross waste wood gasification facility, Teesside EfW facility - Lines 3, 4 & 5, input to planning applications and Permit variations.



MATTHEW BARLOW
Acoustics

Matt is the technical lead of the Acoustic Team. He has undertaken noise and vibration impact assessments, and provided Expert Witness support for a wide range of waste treatment facilities including Riverside Energy Park (EfW &AD), Charlton Lane Eco Park (Gasification) and Redbridge Recycling Transfer Station.



Selected Experience - Energy & Resources



EPCm & Technical Designer – Avonmouth Resource Recovery Centre **Client: Viridor**

Viridor is developing an 80,000 tpa capacity plastics recycling plant, processing plastics from bottles and pots, tubs and trays (PTT). The plant is due to come online in 2021, it will be built adjacent to the Avonmouth energy from waste plant which is under construction at the site near Bristol.

In total it is expected that the plant will produce around 63,000 tonnes of recycled material per annum. Products will include rPET, rHDPE and rPP in flake and pellet form. Stantec's role included; EPCm for the project, Technical and commercial development of packages, Principal Design (Duty under CDM 2015), Design integration and management of interfaces, Development of programme, and Ongoing provision of design and engineering support including design reviews/HAZOPS.

From a concept idea 18 months ago to a fully blown DCO application in c.12 months is truly remarkable, made possible with the guidance and experience of the Stantec

CORY RIVERSIDE ENERGY
Strategic Infrastructure Director

DCO Planning & Environmental Impact Assessment (EIA) for Riverside Energy Park **Client: Cory Riverside Energy**

Since 2017 we have acted as lead planning and environmental advisor to Cory Riverside Energy, supporting them in seeking consent for this major piece of infrastructure.

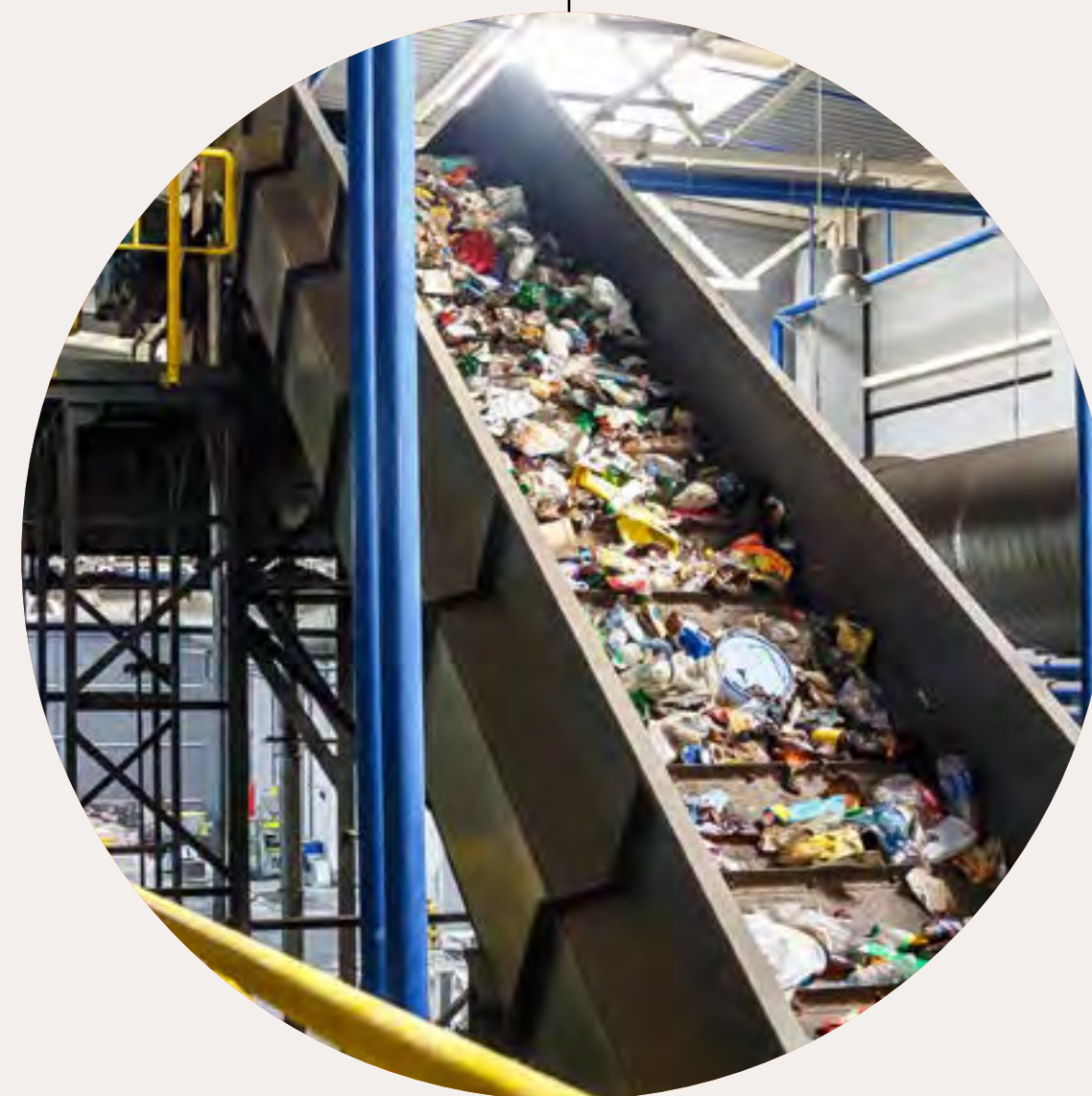
The principal elements of REP comprise an Energy from Waste & Anaerobic Digestion Facility and an associated Electrical Connection. Our services included project management, planning, consultation, EIA, waste management and technical support across a variety of disciplines. The project was granted consent in April 2020.



Selected Experience - Energy & Resources

Technical Adviser – Tees Valley Energy from Waste Plant Client: Hartlepool Council

Stantec is providing technical advisory services to Hartlepool Council for the Tees Valley Energy from Waste Plant. The proposed facility consists of an EfW operation which will recover up to 450,000 tonnes of municipal solid waste (MSW) per annum, supporting the drive to a more sustainable waste management service across the Tees Valley area. As part of our role we are supporting the Council through the tender procurement process to select a suitable DBFO contractor. We are also providing Environmental Permitting advice to the client and reviewing the approaches and timescales set out by Bidders for their obtaining of an Environmental Permit. Support also includes supporting in the development of CCS proposals and funding applications.



Owner's Engineer / Designer - Dunbar Energy Recovery Facility Client: Viridor

Dunbar ERF comprises a two-stream plant processing up to 390,000 tpa of waste (originally designed for 300,000 tpa) and the capacity to generate over 30MWe, including provision for a heat export facility up to 17 MW. Stantec's roles included: owners engineer; review of programme & monthly reporting; support through mobilisation and construction for ancillary projects; ongoing provision of design and engineering support including reviews of technical specifications and design reviews/ HAZOPS; construction and commissioning management services; design of ancillary services works and Principal Designer (Duty under CDM 2015).



Selected Experience - Energy & Resources



Environmental Permitting Support – Runcorn Energy from Waste **Client: Keppel Seghers**

Stantec was appointed by Keppel Seghers to provide planning, permitting, detailed civil and structural design services for a major Energy-from-Waste combined heat and power plant in Runcorn, Cheshire, UK. Stantec's Permitting Team supported the Keppel Seghers design team by reviewing the permit application and the conditions of the draft Environmental Permit against the proposed outline design. They continued their support by providing guidance on indicative Best Available Techniques (BAT) requirements to the design team, and liaising with the Regulator to clarify significant changes to the original design, to ensure the final design complied with the requirements of the environmental permit sector guidance and the conditions within the Environmental Permit.



Environmental Permit Compliance – Review of EMS & Noise Attenuation Assessment **Client: Biffa**

Stantec provided a variety of services relating to the Environmental Permit of Biffa's Anaerobic Digestion facility in Cannock. We were commissioned to complete a noise attenuation assessment in order to determine appropriate attenuation requirements for the assets as part of an improvement condition of their current Environmental Permit. Stantec also undertook a review of the Environmental Management System for the site and provided a detailed report to demonstrate its compliance with the site's Environmental Permit.



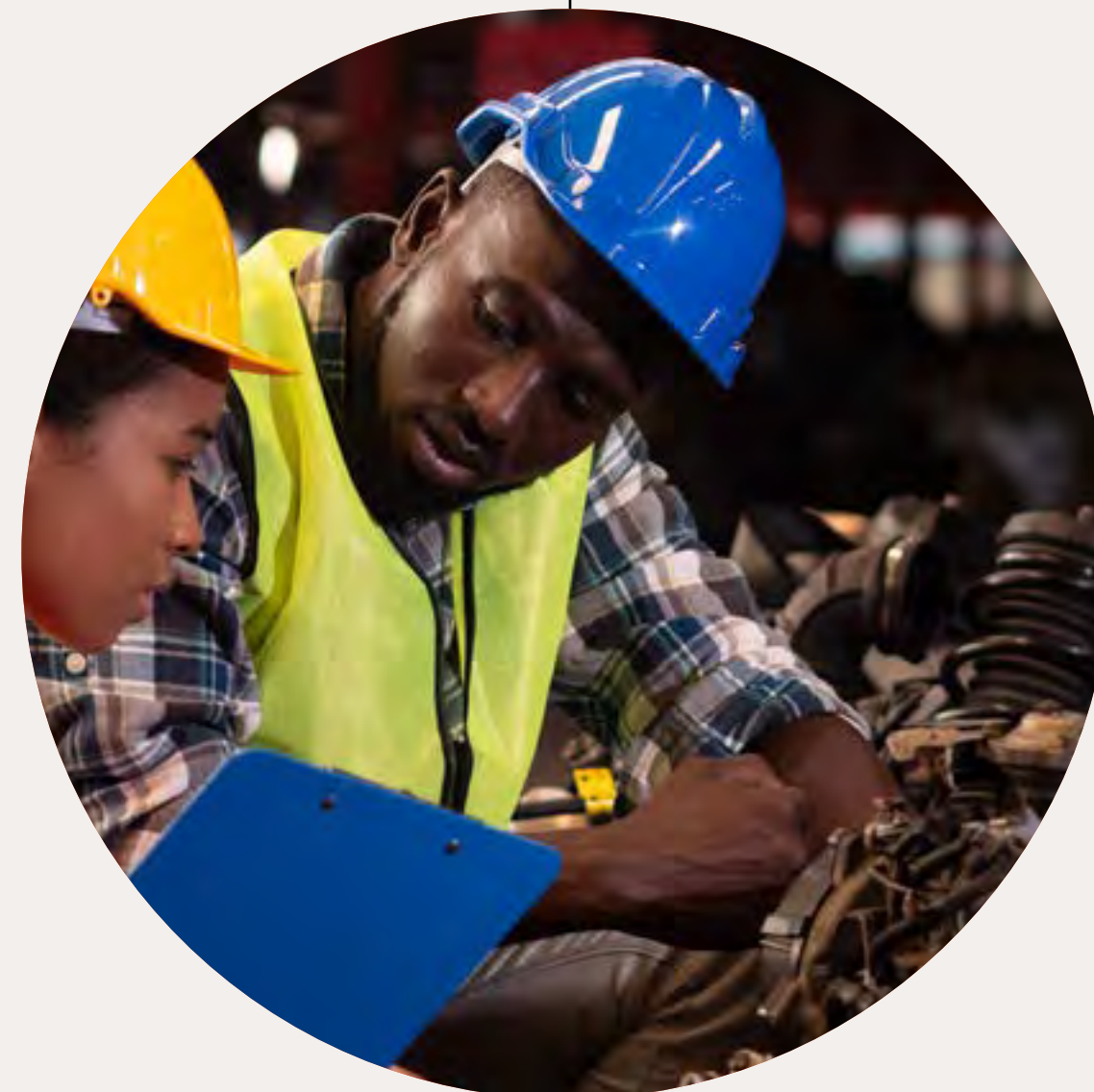
Selected Experience - Energy & Resources



Environmental Permitting – Acoustic Services for Charlton Lane Eco Park Client: M&W

Charlton Lane Eco Park in Shepperton is an innovative new development of facilities to treat residual waste from households in northern Surrey in a sustainable way, together with food waste from homes around the county and a small amount of waste from local businesses. The Eco Park comprises a gasification facility with pre-treatment, an anaerobic digestion facility and a recyclables bulking facility.

Stantec provided acoustic consultancy support and prepared the noise permit application for submission to the Environment Agency. This required a detailed acoustic model of the site to be created including all major sources of noise. Careful liaison and discussion was required with various stakeholders and suppliers in order to determine source sound data for the project.



Environmental & Geotechnical Services - Rookery Energy Park Client: Covanta and O&H

For over a decade, Stantec has been supporting our clients on the restoration and development of the Rookery Energy Park and its transformation from a 90-hectare former brick pit into a resource recovery facility (RRF) and home to an energy-from-waste (EfW) plant.

To help the site become an RRF, Stantec provided support in various ways—planning, project management, and environmental impact assessment coordination as well as acoustic, ecology, and flooding surveys, civil and structural engineering, and stakeholder engagement for the low-level restoration scheme (LLRS) project. We also advised on the construction environmental management plan.



Selected Experience - Energy & Resources



Heat & Power Plan Client: Viridor

Stantec was appointed by Viridor to update the Heat and Power Plan (H&PP) report for the Dunbar Energy Recovery Facility (ERF), located in Dunbar, Scotland. The H&PP aimed to identify and estimate local heat demands, and demonstrate compliance with energy recovery targets provided in Scottish Environmental Protection Agency's (SEPA) Thermal Treatment of Waste Guidelines (TTWG).

Planning for a replacement Energy from Waste Plant Client: Stoke on Trent City Council

Stoke on Trent City Council is looking to replace its old Energy from Waste Plant with a new, more efficient facility. Stantec is acting as technical advisors to the authority as they embark on this process. We are providing strategic advice in relation to the 'planning and permitting strategy' for the project, as well as support in relation to site identification & review, heat offtake, and discrete environmental services, for example Ecology.



Istanbul Energy from Waste Client: Istanbul Metropolitan Municipality

Europe's largest energy-from-waste plant for municipal solid waste in Istanbul. The turnkey contract, together with one-year operation has been awarded to the Swiss company Hitachi Zosen Inova together with its Turkish partner Makyol. The plant is capable of processing up to 1 million tonnes of waste per annum generating around 70 MW of electricity. Stantec's role was to ensure the design develops in accordance with international and national standards and meets legislative regulations and the terms of the contract, as well as overseeing all designs, studies, reports, projects, and calculations prepared by the contractor and report progress to IMM through a number of progress reports which provide progress, comments and recommendations prior to construction starting on site. Stantec's role was extended to review any design changes through the construction phase which started in 2019.



Get in touch



Natalie Maletas

Waste Infrastructure Lead – Planning & Permitting

natalie.maletas@stantec.com

07469 118981



Amer Rafique

Development Director – Energy & Resources

amer.rafique@stantec.com

07900 603386



Jon Maclaren

Director - Thermal Power

jonathan.maclaren@stantec.com

0191 269 9608

