



Doing more, with less

INDUSTRIAL ENGINEERING EXPERTISE



Helping clients optimize their productivity

An industrial engineer is responsible for design, improvement, and implementation of processes and systems that enhance productivity, quality, and safety.

Our Industrial Engineering and design professionals are experts in modeling and analyzing manufacturing, warehousing/distribution, maintenance, and healthcare processes using Industrial Engineering and Lean Manufacturing tools and techniques. Cutting edge technologies are leveraged to model and enhance physical and information-based processes. Wherever there is a process involved, Industrial Engineering can be applied.

We help our clients achieve world-class performance in productivity, quality, and safety by offering:

OPERATIONAL IMPROVEMENTS

- Process improvement
- Systems modeling and discrete event simulation
- Optimization / operations research
- Quality (six sigma, statistical process control)

WORK METHODS

- Time & motion study
- Application of predetermined motion time systems (e.g. BasicMOST)
- Development of engineered labour standards
- Industrial ergonomics assessments

FACILITY DESIGN

- Site and facility evaluation and selection
- Facility planning – functional programming utilizing Lean principles
- Multidisciplinary design – architecture and engineering
- Feasibility studies and business case support
- Equipment specification, layout, and integration with building design
- Material handling strategy and equipment selection, and integration with building design

No. 1

Integrated Architecture
Engineering Firms, BD&C
2019

No. 4

Top 10 by Type of Work—CM/
PM, ENR 2019

No. 8

Top 500 Global Design Firms,
ENR 2020

ISO 9001

2015 Certified Quality
Management System

ISO 14001

2018 Certified Environmental
Services System

\$4.3B

Backlog (FY 2019)

Communities are fundamental. Whether around the corner or across the globe, they provide a foundation, a sense of place and of belonging. That's why at Stantec, we always design with community in mind. We care about the communities we serve—because they're our communities too. This allows us to assess what's needed and connect our expertise, to appreciate nuances and envision what's never been considered, to bring together diverse perspectives so we can collaborate toward a shared success.

We're designers, engineers, scientists, and project managers, innovating together at the intersection of community, creativity, and client relationships. Balancing these priorities results in projects that advance the quality of life in communities across the globe. Stantec trades on the TSX and the NYSE under the symbol STN. Visit us at stantec.com or find us on social media.

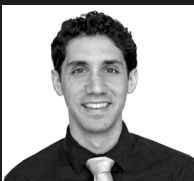
Key Contacts



Alan Schnersch, P.Eng.

Senior Associate, Industrial Engineer
alan.schnersch@stantec.com | (780) 969-3392

Alan has 18 years of experience focused on operational improvement and facilities planning in manufacturing, maintenance/repair/overhaul, transit operations and maintenance, supply chain, and warehousing/distribution. He uses Industrial Engineering, Six Sigma, and Lean methodologies to increase productivity, eliminate waste, and promote efficient and effective use of client resources.



Sy Selick, P.Eng.

Senior Associate, Industrial Engineer
sy.selick@stantec.com | (425) 326-0301

With over 13 years of experience, Sy works closely with clients to creatively design manufacturing and maintenance/repair/overhaul facilities using Lean manufacturing concepts. His work involves initial planning and functional layout concepts, preliminary and detailed design, construction coordination, shop equipment, and move facilitation.



Manan Mistry, EIT

Industrial Designer
manan.mistry@stantec.com | (519) 575-4244

Manan is Industrial Designer with six years of hands on experience in the manufacturing industry, on thermal power projects, in designing and developing cost effective production process using lean techniques, and redesigning workstations and improving plant layouts.



Design with community in mind